

# Pansy Mottle Syndrome

## *Typical Symptoms*

Pansy Mottle Syndrome (PaMS) is a physiological disorder impacting summer-grown pansy and viola crops. Various symptoms are expressed from the seedling stage onwards which vary in severity and frequency by variety. Research is currently trying to identify the conditions which trigger symptom expression.

### Plug plants

Loss of growing point



### Plants during production

Loss of growing point



### Finished plants

Flower and leaf distortion, leaf mottling



Leaf mottling



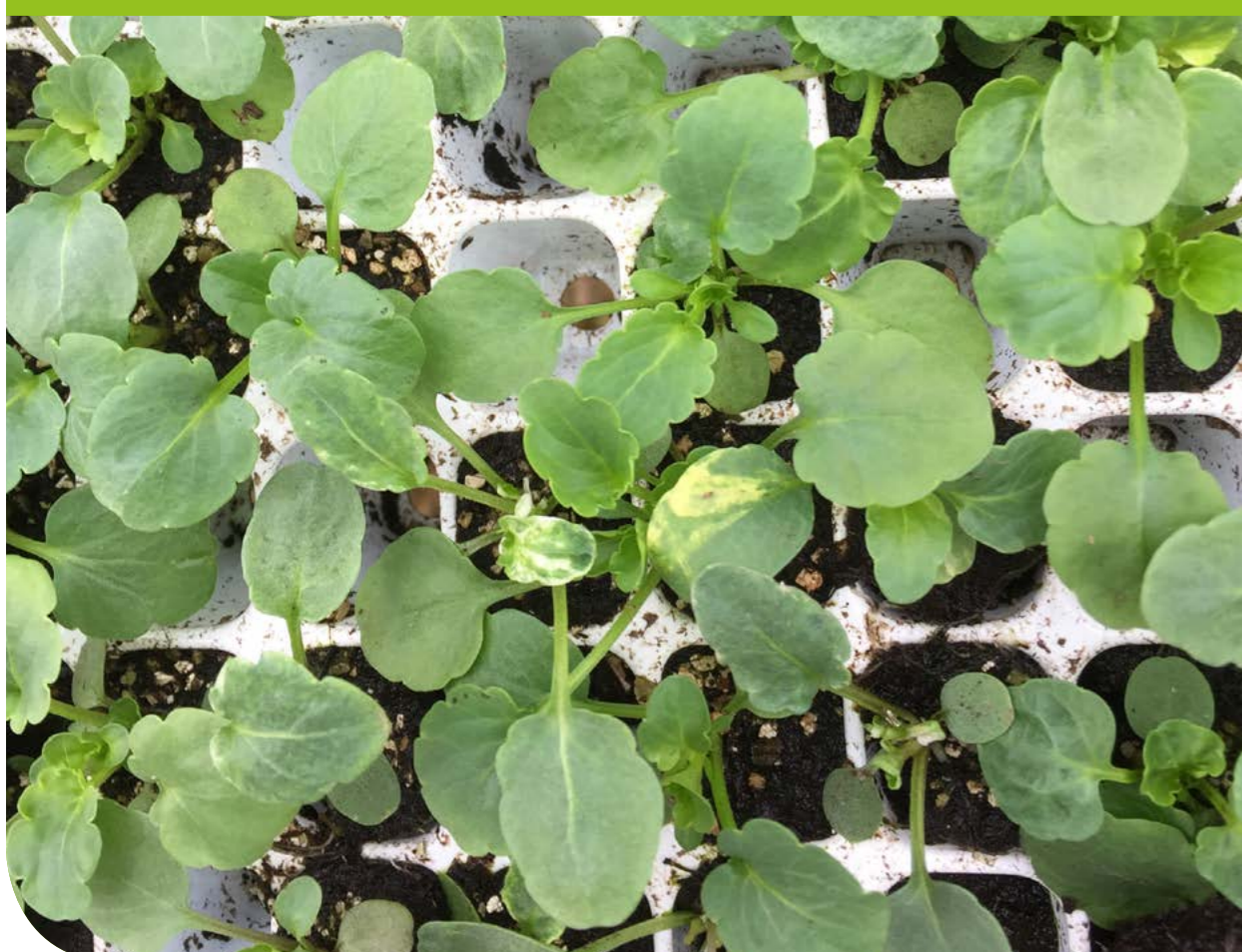
Thickened, strap-like leaves and mottling



Leaf distortion and mottling



Extensive leaf mottling



Strap-like leaves with mottling



Thickened, strap-like leaves

